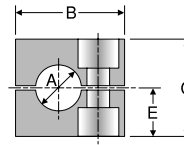


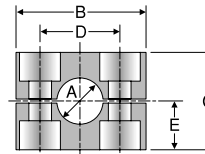
RAP
Clamp Halves



TUBE FITTING PART #	GROUP #	A Metric Tube Size	A Inch Pipe Size	A Inch Tube Size	B (mm)	C (mm)	D (mm)	E (mm)	STANDARD FROM STOCK
RAP006X	0	6	1/8		28	27	—	13.5	•
RAP008X		8		•					
RAP010X		10		•					
RAP012X		12		•					
RAP006.4X		6.4		1/4					•
RAP008X		8		5/16					•
RAP009.5X	9.5	3/8	•						
RAP106X	1	6	1/8		34	27	20	13.5	•
RAP108X		8		5/16					•
RAP110X		10		•					
RAP112X		12		•					
RAP106.4X		6.4		1/4					•
RAP109.5X		9.5		3/8					•
RAP214X	2	14	1/4		40	33	26	16.5	•
RAP215X		15		•					
RAP216X		16		5/8					•
RAP218X		18		•					
RAP213.5X		13.5		3/8					•
RAP217.2X		17.2		1/2					•
RAP212.7X	12.7	•							
RAP320X	3	20	1/2		48	35	33	17.5	•
RAP322X		22		•					
RAP323X		23		•					
RAP325X		25		3/4					•
RAP321.3X		21.3		•					
RAP319X		19		•					
RAP428X	4	28	3/4		57	42	40	21	•
RAP430X		30		•					
RAP426.9X		26.9		•					
RAP532X	5	32	1 1/4		70	58	52	29	•
RAP535X		35		•					
RAP538X		38		1 1/2					•
RAP540X		40		•					
RAP542X		42		•					
RAP533.7X		33.7		1					•
RAP645X	6	45	1 1/2		86	66	66	33	•
RAP648X		48		•					
RAP650X		50		•					
RAP652X		52		•					
RAP655X		55		1 3/4					•
RAP644.5X		44.45		2					•
RAP650.8X	50.8	•							
RAP657X	57	2 1/4	•						



Group 0



Groups 1-6

Material codes for clamp halves:

- Polypropylene - **RAP**
- inside plain - **RAPG (for hose)**
- Polyamide 6 - **RAN (Nylon)**
- inside plain - **RANG (Nylon) (for hose)**
- Aluminum - **RAA**

Dimensions and pressures for reference only, subject to change.